

Link to MMU Cheshire



Manchester
Metropolitan
University

Welcome and contents

Hello and welcome to our applicant newsletter for 2010. By now most of you are just entering the final stretch of your studies prior to starting university in September. This newsletter lets you know about the opportunities available to you at MMU Cheshire from the student's perspective. We also have some information about projects at MMU Cheshire which will make life on campus even more interesting and exciting.

News and opportunities

- Campus Training Camp for 2012 Olympic Games
- Department awarded National Skills Academy status

Experience your degree

What our students have to say

Looking ahead – preparing for university

Life at MMU Cheshire

What you spend

Get up-to-date with student finance and MMU Bursary information

Where you live

How and when to apply for accommodation

What happens next in the UCAS process

- Making your firm and insurance choices
- When you have made your firm and insurance choices

Where your degree at MMU will lead you

- What MMU graduates do
- MMU Alumni

What if you have any questions about MMU

What it's really like at MMU

News and opportunities



Artist's impression of new £9 million Exercise and Sport Science hub due for completion in September 2010

Campus designated as a Pre-Games Training Games Training Camp for the 2012 Olympic Games

The Pre-Games Training Camp (PGTC) is a partnership between Manchester Metropolitan University in Cheshire, Cheshire East Council and the North West Development Agency (NWDA).

All 15 Pacific Island countries need a suitable North West PGTC prior to the 2012 Olympics in London. Vanuatu is one of these countries and on 6th October outgoing President, Joe Carlo, and next President of the Vanuatu National Olympic Committee (NOC), Antoine Boudier, visited MMU Cheshire East PGTC. The Partnership has agreed to provide them with a first class PGTC as well as support to further sport development in Vanuatu wherever possible.

The agreement is likely to mean that one or more Vanuatu teams will be visiting Cheshire East in 2010, 2011 and 2012 as well as in 2013 and 2014 in advance of the Commonwealth Games in Glasgow.

The 2012 Games are designed to act as a stimulus and inspiration for young people across the world and at a local level. We specifically want to see an improvement in sport and physical activity levels in order to ensure that there will be a noticeable improvement in health and wellbeing, social and orderly behaviour, and educational attainment in our young people.

For more information on the Training Camp go to www.london-2012.co.uk/2012-Training-Camps and search by 'City/Town' for 'Crewe'

News and opportunities



Department awarded National Skills Academy Status

Manchester Metropolitan University – awarded the status of Academy Provider for Outdoors – will now offer a number of NGB (National Governing Body) training and assessment courses via the Skills Academy. This includes: British Canoe Union’s UKCC (UK Coaching Certificate) at levels 1 and 2, Personal Performance Awards 1 to 3 stars and Paddle Sports 4 and 5 star leader awards (sea, white-water kayak and canoe); Royal Yachting Association’s Powerboat level 2 and Safety Boat; plus Mountain Leader Training UK’s Mountain Leader Award (ML) and Single Pitch Award (SPA). For those eligible, successful completion of a qualification will attract 60% funding.

As an approved provider, MMU Cheshire is now part of an established network of quality training providers across the country and will be recognised by employers and individuals in the Northwest wanting to work or progress within the broad field of outdoor education. For more information on the National Skills Academy for Sport and Active Leisure, visit www.sportactivenessa.co.uk

MMU Cheshire is building on our current provision of adventurous activities to include a range of short courses offered at introductory, intermediate and advanced levels in mountaineering (rock climbing, hillwalking, winter skills), kayaking (sea, whitewater, surf) canoeing and first aid. We currently deliver bespoke programmes for young people under the “alternative curriculum” banner, and will be developing this initiative further to include adventurous activities and awards. Further information will be on the web soon, until then please contact: outdoor.academy@mmu.ac.uk

For more information on life and facilities available at MMU Cheshire see www.cheshire.mmu.ac.uk

Experience your degree

What our students have to say



Gareth Eschoe

BA (Hons) Business/Music, Year 3

“I was drawn to MMU to study because it was one of the only universities that offered the combination of subjects that I wanted to do. The new facilities at Crewe are excellent. There are industry standard music studios and the Axis Arts Centre has a grand piano. The University provides a lot of external links to get you into industry.”



Tina Elneff – from Denmark

BA (Hons) Business Management Extension, Year 3

“I initially came to MMU Cheshire on a placement. I chose to come to England as the tutors here seemed very supportive in finding us work. Crewe is quite small, but there are still lots of places to go and things to do.”



Iqbal Hoque

HND Business Management, Year 1

“I chose this course because it is local to me and I was really impressed with the course content. I live in Congleton and travel in every day, which is working really well. I’d like to go on to complete the BA (Hons) Business Management Degree and go into business or banking.”

Experience your degree

What our students have to say



Amber Ho – from Malaysia

PhD Business and Management Studies

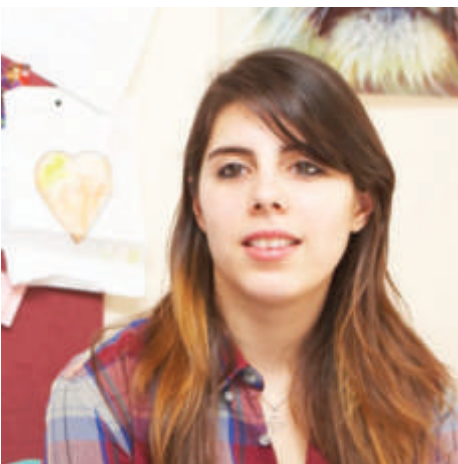
“At first my plan was to come here for the degree and then go back to Malaysia to work, but I found my lecturers very supportive and helpful, which encouraged me to stay on one more year for my Masters and continue onto my PhD. Crewe has a good study environment and people tend to be friendly. For me, Crewe is the best place to study.”



Lauren Bloomfield – from Australia

Worldwide Exchange Student, Business and Management Studies Year 3

“I love the University here; it’s a really tight knit community, which is a lot different to my university at home that is based in the city. I’m living in Booth Hall (Crewe). I really like living next to the campus because it’s easy to go to and from my lectures. I have made a lot of friends here already.”



Ana Vieyra

BA (Hons) Business Management with Marketing, Year 1, also President of MMUC International Society

“I chose to live in halls because it is easier for somebody coming into a new town without knowing the area. It was good to know that everything was going to be organised for me. I knew I wouldn’t have to worry about paying bills or for the internet, which is very useful.”

Looking ahead – preparing for university

We know that you are going to be very busy over the next few months: completing coursework, studying for exams, working and perhaps organising summer work or a summer trip – however September will be here before you know it!

Starting university can be both exciting and challenging. You can make sure that you make the best decisions and the most of your experience by keeping up-to-date with information and preparation.



Life at MMU Cheshire



The MMU Cheshire campus is 40 miles south of Manchester city centre and is a short walk from Crewe railway station. Excellent rail and road links from MMU Cheshire also provide students with opportunities to explore nearby cities. MMU Cheshire students experience the full high quality MMU experience but with all the benefits of friendship, security, support and community that a campus offers. MMU Cheshire is distinctive as a vibrant campus community. We have a commitment to flexibility and matching the needs and interests of every student; with combined honours programmes particularly offering the opportunity to combine a wide range of subjects across disciplines. We achieve this through our strong support services and friendly staff.

The campus is undergoing a £50 million redevelopment programme. Our new Contemporary Arts Building opened in October 2009. The building houses state-of-the-art, recording studios, dance, drama and performance spaces and rehearsal facilities. The lively arts and cultural programme is mainly student driven, and we have a professionally organised Arts Centre.

The new £9 million Exercise and Sport Science hub (artist's impression on p3) is due for completion in September 2010. The centre will house an eight court sports hall, fitness suite, world-class exercise and sport science laboratories and a 3G all weather pitch. With world-class sports performers attracted to our facilities, our student sports teams do very well in national competition.

MMU Cheshire normally provides a place in a hall of residence for all first year students who want one, and many others as well.

For more about life and studying at MMU Cheshire, see:
www.cheshire.mmu.ac.uk

What you spend



Get up-to-date with student finance and MMU Bursary information

MMU has now published bursary figures for 2010 entry applicants.

Bursary facts:

- All UK self-funding students paying the £3,290 tuition fee and receiving the maximum HE Maintenance Grant will receive a bursary of at least £329 from their university. However, Manchester Metropolitan University's bursary scheme is considerably more generous than this.
- Depending on your household income, students starting at MMU in 2010 will get between £475 and £1,025.
- When you apply for student finance (details below), they will determine how much you may borrow for your Student Maintenance Loan and whether you are going to get a Maintenance Grant. The Student Loans Company work out how much of the bursary you are entitled to, provided you (and your parents or partner) have not indicated in your application that you do not wish your information to be shared with the University.
- Bursary amounts are paid directly into your bank account in February and May of the academic year, providing you have been confirmed as being in attendance on the payment dates.
- As with all university finance preparation, it is essential that you submit your application for student support in good time.

For more information on student finance visit www.direct.gov.uk/studentfinance

- ▶ You can also find information on student finance at MMU and watch the new student finance video at: www.finance.mmu.ac.uk/students and www.mmu.ac.uk/study/undergraduate/money-matters

Where you live



How and when to apply for accommodation

If you have firmly accepted an Unconditional or Conditional offer with MMU you can now apply for accommodation online at: www.mmu.ac.uk/accommodation

On the website you can also:

- View details for Halls at MMU Cheshire
- Download the MMU accommodation brochure
- See a video on what it's really like to live in Halls at MMU
- View information on private accommodation
- View contact details and opening times for Cheshire campus accommodation offices

▶ Take the MMU online Student Accommodation tour at www.mmu.ac.uk/accommodation and find out more about accommodation at Cheshire at www.mmu.ac.uk/accommodation/cheshire

What happens next in the UCAS process

Making your firm and insurance choices

It is very important that you understand your offer/offers and what they mean. Timescales for making decisions on offers vary depending on when you submitted your UCAS application and when you received formal decisions. You need to check the UCAS website very carefully – particularly the following two sections:

www.ucas.ac.uk/students/offers/offertypes

www.ucas.ac.uk/students/importantdates

When you have made your firm and insurance choices

If you have firmly accepted an Unconditional offer*:

- You will be sent further joining and enrolment instructions by your first choice institution in due course

If you have firmly accepted a Conditional offer*:

- This year GCE (A level) results day is Thursday 19th August. If you are studying for another kind of qualification, such as a BTEC or Access course you may receive your results slightly earlier.
- When you have your results, you must check your status on Track at www.ucas.com and follow the instructions within your offer letter from UCAS.
- If your place is confirmed at MMU we will send you joining and enrolment instructions as soon as possible.

* for full details on UCAS terms and conditions see www.ucas.com

Where your degree at MMU will lead you



Hywel Satherley, BSc (Hons) Sport with Coaching and Exercise Science,
Senior Coaching and Education Officer, British Cycling

What MMU graduates do

MMU provides excellent facilities, dedicated professional staff and access to many opportunities to help you become as successful as possible in your future professional life. Finding out about what MMU graduates do and what they have gone on to achieve may help you to see how your studies will help you in the future.

91% of our graduates go straight into work or further study within 6 months of graduation* and many of our graduates have gone on to successful professional careers. You can read MMU graduate profiles at www.mmu.ac.uk/study/undergraduate/why-mmu/profiles

The people you will meet and the opportunities you will have at MMU will help you to make many new friends and contacts for the future.

Find out more about student life and the MMU experience at www.mmu.ac.uk

*source DLHE survey 2008 for all respondents available for employment or further study and whose destinations were known

Where your degree at MMU will lead you



Laoise Flanagan, BA (Hons) Business,
North West Marketing and PR Manager, Deloitte

MMU Alumni

The MMU Alumni Association is for all those who have successfully completed a course of study at MMU. Membership is free and members receive a wide range of benefits and services, including discount offers and special promotions, invitations to networking and sector-specific events, as well as the opportunity to stay connected with students, staff and other alumni. You can view more about MMU alumni and download MMU Success magazine at www.mmu.ac.uk/alumni

MMU Inspirational Alumni include:

- Julie Walters, Diploma in Speech and Drama, 1973, **Actress**
- Richard Woolfe, Manchester Polytechnic, **Controller, Sky One, Two and Three, Controller for Channel Five**
- Evelyn J Asante-Mensah, OBE MA Women's Studies, 1998, Doctor of Letters 2003 **Head of Diversity and Equality, Northwest Regional Development Agency. Chair for Race for Health, Chair of the Central Manchester Primary Care Trust and a Commissioner for the Equal Opportunities Commission.**
- Duncan Ogilvy, MSc Sport and Exercise Science, 2008, **Basketball Player, Manchester Magic**

▶ You can find out more and see video interviews with the above and other MMU notable Alumni at www.mmu.ac.uk/alumni and www.mmu.ac.uk/alumni/benefits/success

What if you have any questions about MMU



What it's really like at MMU

If you have any questions about student life at MMU, you can contact one of our student ambassadors – just email us at askastudent@mmu.ac.uk

You can also visit our website at www.mmu.ac.uk/study/askastudent for tips from MMU students and frequently asked questions about student life and MMU.

There is lots of information about MMU Cheshire and student life at MMU Cheshire at www.cheshire.mmu.ac.uk

▶ Find out more and see videos about studying at MMU at www.mmu.ac.uk

Have you found this communication useful?

Do you have any comments about receiving this information in PDF format, as opposed to a HTML email linking to content on the MMU website or in print?

All comments welcome to Editor

Editor: Marianne Knowles

(Tel 0161 247 3413 / m.knowles@mmu.ac.uk)

Printing Out?

If you are considering printing out any of the pages in this newsletter, you may wish to go to the print dialogue box of your PDF reader and change the page scaling to 'multiple pages per sheet'. You will then be able to print out two easily readable pages of the newsletter on a single A4 sheet. And don't forget to set your printer to print on both sides if you have the option.